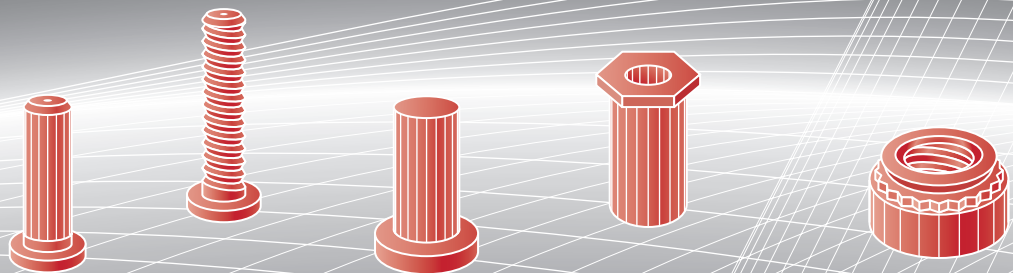


SELF CLINCHING FASTENERS

SELECTION OF THE MOST USED PRODUCTS

2009



connection without compromise

EN

WORLD-QUALITY SELF CLINCHING FASTENERS FOR STEEL SHEETS

We have been an active trading company in the Slovak market since **1997**.

As technological pioneers in the field of self clinching fasteners in Slovakia, we are the leaders in this market.

Our suppliers are renowned foreign companies which have supplied mainly worldwide TV-set producers for a long time.

Their high quality production is ensured by certification according to **ISO9001:2000, ISO 14001, PQA** for metallurgical materials, **IPQC** for testing in the production process, **OQC** for final inspection, by scanning critical dimensions and other measures. All their products comply with the **ROHS**-Directive.

Our customers are top Slovak companies in the field of steel sheet processing, as well as foreign companies which use our self clinching fasteners for components used by **PHILIPS** and **SAMSUNG** in manufacturing TV-sets.

In our Bratislava warehouse we maintain more than 3 million self clinching fasteners. Ordered goods are delivered **within 24 hours in Slovakia**, by **UPS** courier service. To neighbouring countries, goods are shipped via **DPD** and **GLS** forwarding companies.

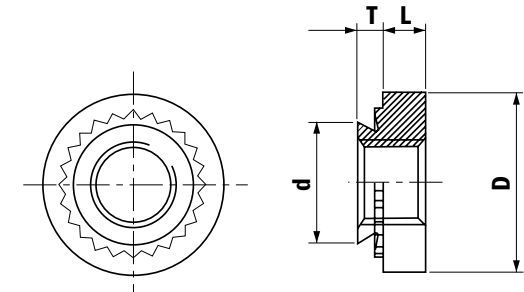
IMP KONTAKT Ltd.

connection without compromise

IMPS / SELF CLINCHING NUTS, ZINC PLATED STEEL
IMPH / SELF CLINCHING NUTS, ZINC PLATED STEEL
IMPCLS / SELF CLINCHING NUTS, STAINLESS STEEL

SELF CLINCHING NUT / CN

Thread Spec.	Thread Size	Neck Type (T'max)				Length L ± 0.25								Recommended Hole in Steel Sheet + 0.08/ -0	Diameter d max	Diameter D ± 0.25
		0	1	2	3											
M2	M2 X 0.4	0.76	0.97	1.37	-	1.5	-	-	-	-	-	-	-	4.25	4.22	6.3
M2.5	M2.5 X 0.45	0.76	0.97	1.37	-	1.5	-	-	-	-	-	-	-	4.25	4.22	6.3
M3	M3 X 0.5	0.76	0.97	1.37	-	1.5	-	-	-	-	-	-	-	4.25	4.22	6.3
M3.5	M3.5 X 0.6	0.76	0.97	1.37	-	1.5	-	-	-	-	-	-	-	4.76	4.73	7.1
M4	M4 X 0.7	0.76	0.97	1.37	-	-	-	2	-	-	-	-	-	5.40	5.38	7.9
M5	M5 X 0.8	0.76	0.97	1.37	-	-	-	2	-	-	-	-	-	6.40	6.38	8.7
M6	M6 X 1.0	1.15	1.37	2.21	-	-	-	-	-	4.08	-	-	-	8.75	8.72	11.05
M8	M8 X 1.25	-	1.37	2.21	-	-	-	-	-	-	-	5.47	-	10.50	10.47	12.65
M10	M10 X 1.5	-	2.21	3.05	-	-	-	-	-	-	-	-	7.48	14.00	13.97	17.35
HM10	M10x1,5	-	1,5	-	-	-	-	-	-	-	-	-	7,9	12.70	12.67	16.50
M12	M12x1.75	-	3,2	6,3	-	-	-	-	-	-	-	-	8,5	16.97	16.95	20.55
														+0.003 / -0 zoll		
256	#2-56	0.76	0.97	1.37	-	-	1.78	-	-	-	-	-	-	0.1660	4.19	6.35
440	#4-40	0.76	0.97	1.37	2.21	-	1.78	-	-	-	-	-	-	0.1660	4.19	6.35
632	#6-32	0.76	0.97	1.37	2.21	-	1.78	-	-	-	-	-	-	0.1875	4.75	7.11
832	#8-32	0.76	0.97	1.37	2.21	-	-	-	2.29	-	-	-	-	0.2130	5.38	7.87
1024	#10-24	0.76	0.97	1.37	2.21	-	-	-	2.29	-	-	-	-	0.2500	6.32	8.64
1032	#10-32	0.76	0.97	1.37	2.21	-	-	-	2.29	-	-	-	-	0.2500	6.32	8.64
0420	1/4-20	1.14	1.37	2.21	3.05	-	-	-	-	-	4.32	-	-	0.3440	8.71	11.18



ORDER EXAMPLES:

- IMPS-M4-1ZI, nut, zinc-plated steel, internal thread M4, use for min. steel sheet thickness of 0.97 mm (NECK TYPE 1)
- IMPH-M10-1-ZI, nut, zinc-plated steel, internal thread M10, use for min. steel sheet thickness of 1.5 mm (NECK TYPE 1)
- IMPS-1024-2-ZI, nut, zinc-plated steel, internal thread UNC # 10-24, use for min. steel sheet thickness of 1.37 mm (NECK TYPE 2)
- IMPCLS-M5-0, nut, stainless steel, internal thread M5, use for min. steel sheet thickness of 0.76 mm (NECK TYPE 0)

USE:

IMPS, IMPH, pressing into steel sheet of max. hardness HR_B 80
 IMPCLS, pressing into steel sheet of max. hardness HR_B 70

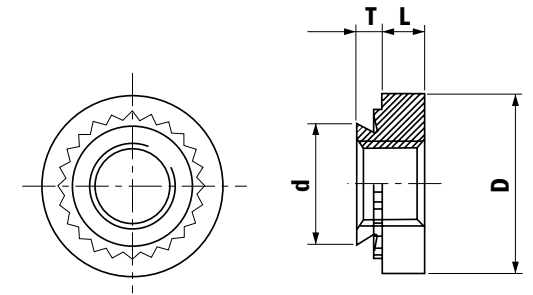
IMPORTANT NOTES:

- All stated dimensions are in mm (inch - holes in steel sheet)
- IMPS, IMPH - steel grade 10, colourless zinc-plating
- IMPCLS - stainless steel, AISI 416 (DIN X12CrS13)
- Data modification reserved without prior notice

IMPSP / SELF CLINCHING NUTS FOR STAINLESS STEEL SHEETS, STAINLESS STEEL

SELF CLINCHING NUTS FOR STAINLESS STEEL / CNP

Thread Spec.	Thread Size	Neck Type (T' max)			Length L ± 0.25						Recommended Hole + 0.08/ -0	Diameter d max	Diameter D ± 0.25
		0	1	2									
M3	M3 X 0.5	0.76	0.97	1.37	1.5	-	-	-	-	-	4,25	4.22	6.3
M4	M4 X 0.7	0.76	0.97	1.37	-	-	2	-	-	-	5,40	5.38	7.9
M5	M5 X 0.8	0.76	0.97	1.37	-	-	2	-	-	-	6,40	6.38	8.7
M6	M6 X 1	-	1.37	-	-	-	-	-	4.1	-	8,75	8.72	11.1
440	#4-40	0.76	0.97	1.37	-	1.78	-	-	-	-	4,22	4.19	6.35
632	#6-32	0.76	0.97	1.37	-	1.78	-	-	-	-	4,78	4.75	7.11
832	#8-32	0.76	0.97	1.37	-	-	-	2.29	-	-	5,41	5.38	7.87
1032	#10-32	0.76	0.97	1.37	-	-	-	2.29	-	-	6,35	6.32	8.64
0420	1/4-20	-	1.37	-	-	-	-	-	-	4.32	8,74	8.71	11.18



ORDER EXAMPLES:

IMPSP-M6-1, stainless steel nut, internal thread M6, use for min. steel sheet thickness of 1.37 mm (NECK TYPE 1)
 IMPSP-832-0, stainless steel nut, internal thread UNC # 8-32, use for min. steel sheet thickness of 0.76 mm (NECK TYPE 0)

USE:

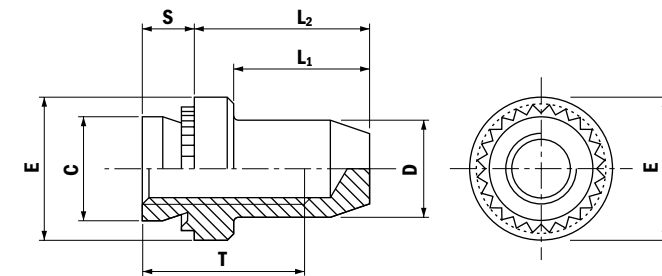
IMPSP, specially designed for pressing into stainless steel sheet of max. hardness up to a_z HR_B 90

IMPB / SELF CLINCHING BLIND NUTS, ZINC PLATED STEEL

IMPBS / SELF CLINCHING BLIND NUTS, STAINLESS STEEL

FLUSH NUT / FN

Thread Spec.	Thread Size	Recommended Hole Size + 0.08/ -0	Min. Steel Sheet Thickness	S max	C max	D max	E ± 0.25	L1 max	L2 ± 0.25	T min
M3	M3 X 0.5	4.25	1.0 1.4	0.97 1.37	4.22	3.84	6.35	8.5	9.6	5.2
M4	M4 X 0.7	5.40	1.0 1.4	0.97 1.37	5.38	5.20	7.95	9.8	11.2	7.0
M5	M5 X 0.8	6.40	1.0 1.4	0.97 1.37	6.38	6.10	8.75	9.8	11.2	7.0
M6	M6 X 1.0	8.75	1.4 2.3	1.37 2.21	8.72	7.80	11.10	12.7	14.3	7.7



ORDER EXAMPLES:

IMPB-M3-1-ZI, nut closed, zinc-plated, internal thread M3, use for min. steel sheet thickness 0.97 mm (NECK TYPE 1)
 IMPBS-M3-2, nut closed, stainless steel, internal thread M3, use for min. steel sheet thickness 1.37 mm (NECK TYPE 2)

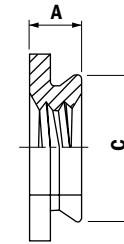
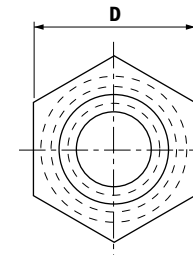
USE:

IMPB – pressing into steel sheet of max. hardness HR_B 80
 IMPBS – pressing into steel sheet of max. hardness HR_B 70

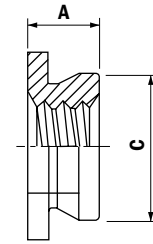
IMPORTANT NOTES:

1. All stated dimensions are in mm (inch – holes in steel sheet)
2. IMPB – steel grade 8, colourless zinc-plating
3. IMPBS – stainless steel, AISI 300
4. Data modification reserved without prior notice

Thread Spec.	Thread Size	Recommended Hole in Steel + 0.08/ -0	Neck Type (A max)					Dimension D NOM	Diameter C max
			1	2	3	4	5		
M2	M2 X 0.4	4.40	1.5	2.3	-	-	-	4.34	4.8
M2.5	M2.5 X 0.45	4.40	1.5	2.3	-	-	-	4.34	4.8
M3	M3 X 0.5	4.40	1.5	2.3	-	-	-	4.34	4.8
M4	M4 X 0.7	7.40	1.5	2.3	-	-	-	7.34	7.9
M5	M5 X 0.8	7.90	1.5	2.3	-	-	-	7.87	8.7
M6	M6 X 1.0	8.75	-	-	3.1	3.9	4.7	8.71	9.5
256	#2-56		1.52	2.3	-	-	-	4.34	4.78
440	#4-40		1.52	2.3	-	-	-	4.34	4.78
632	#6-32		1.52	2.3	-	-	-	5.38	6.35
832	#8-32		1.52	2.3	-	-	-	7.34	7.92
1032	#10-32		1.52	2.3	-	-	-	7.9	8.71
0420	1/4-20		-	-	3.05	3.84	4.62	8.71	9.53



NECK TYPE 1



NECK TYPE 2, 3, 4, 5

ORDER EXAMPLES:

- IMPF-M4-2, stainless steel nut, internal thread M4, min. steel sheet thickness 2.3 mm (NECK TYPE 2)
- IMPF-0420-4, stainless steel nut, internal thread UNC 1/4-20, min. steel sheet thickness 3.9 mm (NECK TYPE 4)

USE:

IMPF – pressing into steel sheet of max. hardness HR_B 70

IMPORTANT NOTES:

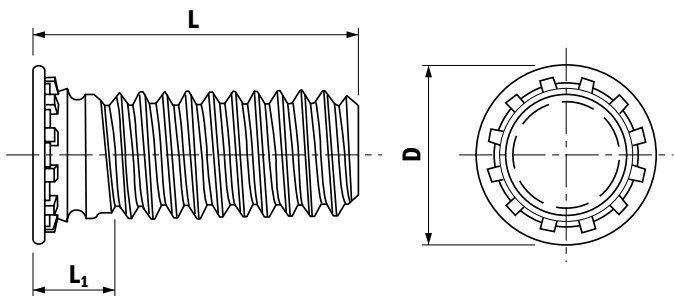
1. All stated dimensions are in mm
2. IMPF – stainless steel, AISI 416 (DIN X12CrS13)
3. Data modification reserved without prior notice

IMPFH / SELF CLINCHING STUDS, ZINC PLATED STEEL

IMPFHS / SELF CLINCHING STUDS, STAINLESS STEEL

SELF CLINCHING STUD / BT

Thread Spec.	Thread Size	Hole + 0.08/ -0	Length L ±0.4																		Min. Steel Sheet Thickness	Diameter D ± 0.4	L1 max	
			6	-	-	8	10	12	-	15	-	18	-	20	-	25	-	-	-	-				-
M3	M3 X 0.5	3.00	6	-	-	8	10	12	-	15	-	18	-	20	-	25	-	-	-	-	-	1.0	4.6	2.1
M4	M4 X 0.7	4.00	6	-	-	8	10	12	-	15	-	18	-	20	-	25	-	30	-	35	-	1.0	5.9	2.4
M5	M5 X 0.8	5.00	-	-	-	8	10	12	-	15	-	18	-	20	-	25	-	30	-	35	-	1.0	6.5	2.7
M6	M6 X 1	6.00	-	-	-	-	10	-	12	15	-	18	-	20	-	25	-	30	-	35	-	1.6	8.2	3.0
M8	M8-1.25	8.00	-	-	-	-	-	12	-	15	-	18	-	20	-	25	-	30	-	35	-	2.5	9.6	3.7
256	#2-56	#2	-	6.35	7.92	-	9.52	-	12.7	-	15.87	-	19.05	-	22.22	-	25.4	-	31.75	-	38.1	1.0	3.65	1.9
440	#4-40	#4	-	6.35	7.92	-	9.52	-	12.7	-	15.87	-	19.05	-	22.22	-	25.4	-	31.75	-	38.1	1.0	4.47	2.16
632	#6-32	#6	-	6.35	7.92	-	9.52	-	12.7	-	15.87	-	19.05	-	22.22	-	25.4	-	31.75	-	38.1	1.0	5.23	2.28
832	#8-32	#8	-	6.35	7.92	-	9.52	-	12.7	-	15.87	-	19.05	-	22.22	-	25.4	-	31.75	-	38.1	1.0	6.0	2.28
1024	#10-24	#10	-	6.35	7.92	-	9.52	-	12.7	-	15.87	-	19.05	-	22.22	-	25.4	-	31.75	-	38.1	1.0	6.5	2.54
1032	#10-32	#10	-	6.35	7.92	-	9.52	-	12.7	-	15.87	-	19.05	-	22.22	-	25.4	-	31.75	-	38.1	1.0	6.5	2.54



ORDER EXAMPLES:

- IMPFH-M4-8-ZI, steel stud, zinc-plated, thread M4, total length 8 mm
- IMPFHS-M4-8, stainless steel stud, M4, total length 8 mm
- IMPFH-1032-12.7-ZI, steel stud, zinc-plated, thread UNF # 10-32, total length 12.7 mm

USE:

- IMPFH - pressing into steel sheet of max. hardness HR_B 80
- IMPFHS - pressing into steel sheet of max. hardness HR_B 70

IMPORTANT NOTES:

- All stated dimensions are in mm
- IMPFH - steel grade 8.8, colourless zinc-plating
- IMPFHS - stainless steel, AISI 416 (DIN X 12CrS13)
- Stamping stud with small head is specified as IMPFHL (only up to size M5)
- A special type IMPFH 4 is designated for stainless steel HRB 90 (only up to size M5)
- Data modification reserved without prior notice

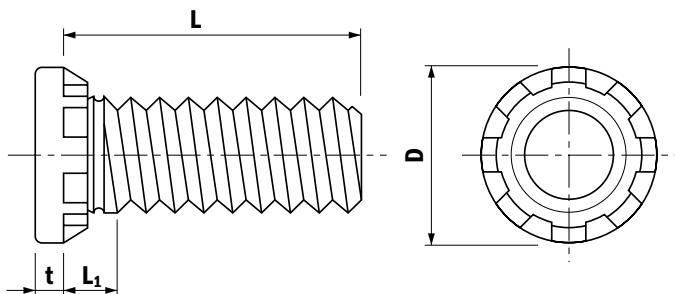
IMPHFH
IMPHFHS

/ SELF CLINCHING STUDS FOR HIGH DENSITY, ZINC PLATED STEEL

/ SELF CLINCHING STUDS FOR HIGH DENSITY, STAINLESS STEEL

CLINCHING STUD / HFH

Thread Spec.	Thread Size	Recommended Hole Size + 0.12/ +0	Length L ±0.4							Dimension D ± 0.4	Dimension L1 max	Dimension t max
			15	20	25	30	35	40	50			
M5	M5 X 0.8	5.0	15	20	25	30	35	40	50	7.8	2.7	1.15
M6	M6 X 1.0	6.0	15	20	25	30	35	40	50	9.4	2.8	1.28
M8	M8 X 1.25	8.0	15	20	25	30	35	40	50	12.5	3.5	1.80
M10	M10 X 1.75	10.0	15	20	25	30	35	40	50	15.7	4.1	2.30



ORDER EXAMPLES:

IMPHFH-M8-30-ZI, steel stud, zinc-plated, thread M8, length 30 mm
 IMPHFHS-M8-30, stainless steel stud, thread M8, length 30 mm

USE:

IMPHFH - pressing into steel sheet of max. hardness HR_B 85
 IMPHFHS - pressing into steel sheet of max. hardness HR_B 70

IMPORTANT NOTES:

1. All stated dimensions are in mm
2. IMPHFH - steel grade 9.8, colourless zinc-plating
3. IMPHFHS - stainless steel, AISI 416 (DIN X 12CrS13)
4. Data modification reserved without prior notice

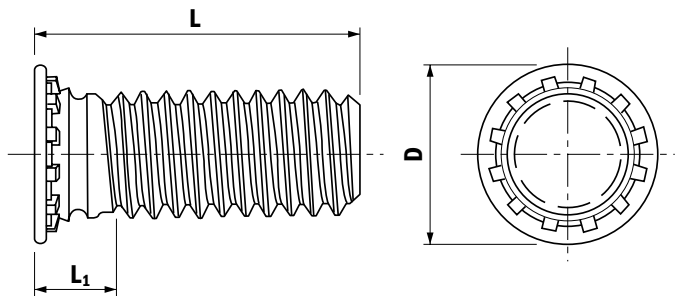
IMPFHL
IMPFHLS

/ **SELF CLINCHING SMALL FLANGE STUDS, ZINC PLATED STEEL**

/ **SELF CLINCHING SMALL FLANGE STUDS, STAINLESS STEEL**

SELF CLINCHING STUD / BTL

Thread Spec.	Thread Size	Recom. Hole Size + 0.08/ -0	Length L ±0.4																				Min. Steel Sheet Thickness	Diameter D ± 0.4	L1 max
			6	-	-	8	-	10	12	-	15	-	18	-	20	-	25	-	-	-	-	-			
M3	M3 X 0.5	3,00	6	-	-	8	-	10	12	-	15	-	18	-	20	-	25	-	-	-	-	-	1.0	3.65	2.1
M4	M4 X 0.7	4,00	6	-	-	8	-	10	12	-	15	-	18	-	20	-	25	-	30	-	35	-	1.0	4.65	2.4
M5	M5 X 0.8	5,00	-	-	-	8	-	10	12	-	15	-	18	-	20	-	25	-	30	-	35	-	1.0	5.9	2.7
256	#2-56	#2	-	6.35	7.92	-	9.52	-	-	12.7	-	15.87	-	19.05	-	22.22	-	25.4	-	31.75	-	38.1	1.0	2.84	2.03
440	#4-40	#4	-	6.35	7.92	-	9.52	-	-	12.7	-	15.87	-	19.05	-	-	-	-	-	-	-	-	1.0	3.5	2.16
632	#6-32	#6	-	6.35	7.92	-	9.52	-	-	12.7	-	15.87	-	19.05	-	22.22	-	25.4	-	-	-	-	1.0	4.16	2.28
832	#8-32	#8	-	6.35	7.92	-	9.52	-	-	12.7	-	15.87	-	19.05	-	22.22	-	25.4	-	31.75	-	38.1	1.0	4.82	2.28
1032	#10-32	#10	-	63.5	7.92	-	9.52	-	-	12.7	-	15.87	-	19.05	-	22.22	-	25.4	-	31.75	-	38.1	1.0	5.71	2.54



ORDER EXAMPLES:

IMPFHL-M4-8-ZI, steel stud, zinc-plated, thread M4, total length 8 mm
IMPFHLS-M4-8, stainless steel stud, M4, total length 8 mm
IMPFHL-1032-12.7-ZI, steel stud, zinc-plated, thread UNF # 10-32, total length 12.7 mm

USE:

IMPFHL - pressing into steel sheet of max. hardness HR_B 80
IMPFHLS - pressing into steel sheet of max. hardness HR_B 70

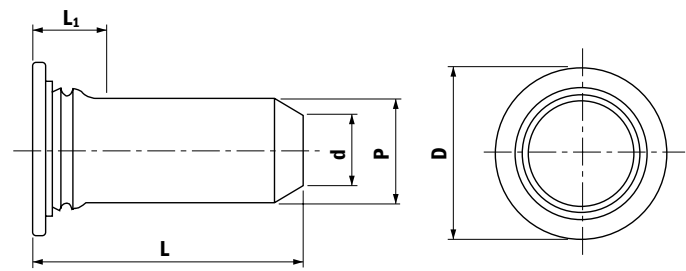
IMPORTANT NOTES:

1. All stated dimensions are in mm
2. IMPFHL - steel grade 8.8, colourless zinc-plating
3. IMPFHLS - stainless steel, AISI 416 (DIN X 12CrS13)
4. Data modification reserved without prior notice

IMPTPS / SELF CLINCHING PINS, STAINLESS STEEL

SELF CLINCHING PIN / BTP

Thread Spec.	Diameter P ± 0.05	Hole + 0.08 / -0	Length L ± 0.4										Diameter D ± 0.4	Diameter d ± 0.15	Length L1 max
			8	10	12	16	20	25.4	31.7	38.1	44.5	50.8			
3MM	3	3,50	8	-	10	12	-	-	16	-	-	-	5.2	2.05	2.29
4MM	4	4,50	8	-	10	12	-	-	16	-	-	-	6.12	2.82	2.29
5MM	5	5,50	-	-	10	12	-	-	16	-	20	-	7.19	3.53	2.29
6MM	6	6,50	-	-	-	12	-	-	16	-	20	-	8.13	4.24	2.29
125	3.17	-	-	9.52	-	-	12.7	15.87	-	19.05	-	-	5.2	2.28	2.29
187	4.75	-	-	9.52	-	-	12.7	15.87	-	19.05	-	25.4	6.85	3.35	2.29
250	6.35	-	-	-	-	-	12.7	15.87	-	19.05	-	25.4	8.51	4.49	2.29



ORDER EXAMPLES:

- IMPTPS-3MM-8, stainless steel pin, diameter 3 mm, total length 8 mm
- IMPTPS-187-12.7, stainless steel pin, diameter 4.75 mm, total length 12.7 mm

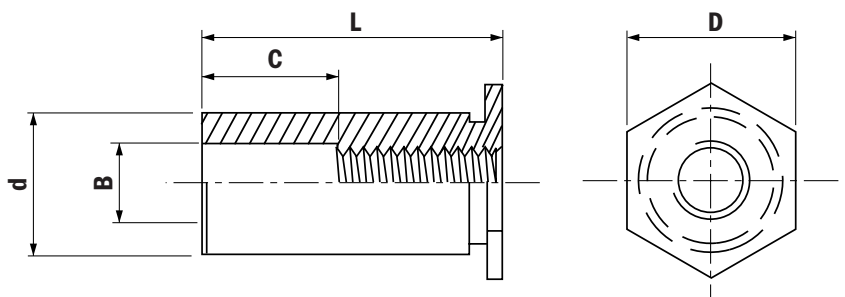
IMPORTANT NOTES:

1. All stated dimensions are in mm
2. IMPTPS – stainless steel, AISI 416 (DIN X 12CrS13)
3. Data modification reserved without prior notice

USE:

IMPTPS - stamping into steel sheet of max. hardness HR_B 70

Thread Spec.	Thread Size	Length L +0.05 / -0.13																				Dimension B ± 0.13	Diameter d - 0.13	Diameter D								
		3	4	6	8	10	12	14	16	18	20	22	25	3.2	4.8	6.4	7.9	9.5	11.1	12.7	14.3				15.9	17.5	19.1	20.7	22.3	23.9	25.5	
M3	M3 X 0.5	3	-	4	-	6	-	-	8	-	10	-	12	-	14	-	-	16	-	18	-	-	-	-	-	3.2	4.19	4.8				
BM3	M3 X 0.5	3	-	4	-	6	-	-	8	-	10	-	12	-	14	-	-	16	-	18	-	-	-	-	-	3.2	5.38	6.4				
M3.5	M3.5 X 0.6	3	-	4	-	6	-	-	8	-	10	-	12	-	14	-	-	16	-	18	-	20	22	25	-	3.9	5.38	6.4				
M4	M4 X 0.7	3	-	4	-	6	-	-	8	-	10	-	12	-	14	-	-	16	-	18	-	20	22	25	-	4.8	7.11	7.9				
M5	M5 X 0.8	3	-	4	-	6	-	-	8	-	10	-	12	-	14	-	-	16	-	18	-	20	22	25	-	5.35	7.11	7.9				
440	#4-40	-	3.17	-	4.75	-	6.35	7.92	-	9.53	-	11.09	-	12.7	-	14.27	15.87	-	17.45	-	19.05	-	-	-	-	3.17	4.19	4.76				
B440	#4-40	-	3.17	-	4.75	-	6.35	7.92	-	9.53	-	11.09	-	12.7	-	14.27	15.87	-	17.45	-	19.05	-	-	-	-	3.17	5.38	6.35				
632	#6-32	-	3.17	-	4.75	-	6.35	7.92	-	9.53	-	11.09	-	12.7	-	14.27	15.87	-	17.45	-	19.05	20.62	22.23	23.8	25.4	3.96	5.38	6.35				
B632	#6-32	-	3.17	-	4.75	-	6.35	7.92	-	9.53	-	11.09	-	12.7	-	14.27	15.87	-	17.45	-	19.05	20.62	22.23	23.8	25.4	3.96	7.11	7.94				
832	#8-32	-	3.17	-	4.75	-	6.35	7.92	-	9.53	-	11.09	-	12.7	-	14.27	15.87	-	17.45	-	19.05	20.62	22.23	23.8	25.4	4.77	7.11	7.94				
1032	#10-32	-	3.17	-	4.75	-	6.35	7.92	-	9.53	-	11.09	-	12.7	-	14.27	15.87	-	17.45	-	19.05	20.62	22.23	23.8	25.4	5.15	7.11	7.94				
Bore Length C ± 0.25		No dimension							4.75							7.92							11.09									


ADDITIONAL BASIC PARAMETERS

THREAD TYPE	RECOMMENDED MINIMUM THICKNESS OF STEEL SHEET	RECOMMENDED HOLE SIZE IN STEEL SHEET + 0.08 / - 0.0
M3	1	4.2
BM3	1	5.4
M3.5	1	5.4
M4	1.3	7.2
M5	1.3	7.2
440	1	4.2
B440	1	5.4
632	1	5.4
B632	1.3	7.14
832	1.3	7.14
032	1.3	7.14

ORDER EXAMPLES:

IMPSO-M4-8-ZI, steel standoff, zinc-plated, internal thread M4, total length 8 mm

IMPSOS-M4-8, stainless steel standoff, internal thread M4, total length 8 mm

IMPSO-032-12.7-ZI, steel standoff, zinc-plated, internal thread UNF #10-32, total length 12.7 mm

IMPSO-BM3-8-ZI, steel standoff, zinc-plated, with thicker wall (older specification IMPSO-3.5-M3-8-ZI)

USE:

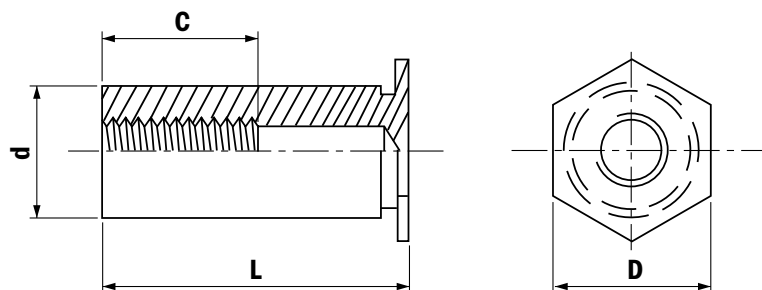
IMPSO - pressing into steel sheet of max. hardness HR_B 80

IMPSOS - pressing into steel sheet of max. hardness HR_B 70

IMPORTANT NOTES:

- All stated dimensions are in mm
- Thread types BM3, B440 and B632 have greater wall thickness. Specification 3.5-M3, 3.5-440, 3.5-632 used as well.
- Stainless steel grade AISI 416 (DIN X 12CrS13)
- Threadless standoff (only with bore) is supplied under specification IPMUSO (not in stock in BA)
- A special type IMPSOH is designed for stainless steel sheets HRB 90 (not in stock in BA)
- Data modification reserved without prior notice

Thread Spec.	Thread Size	Length L +0.05 / -0.13																				Diameter d - 0.13	Diameter D			
		6	8	10	12	14	16	18	20	22	25	28	30	32	35	38	40	42	45	48	50					
M3	M3 X 0.5	6	-	8	-	10	-	12	-	14	-	16	-	18	-	20	-	22	-	25	-	28	-	30	4.19	4.8
BM3	M3 X 0.5	6	-	8	-	10	-	12	-	14	-	16	-	18	-	20	-	22	-	25	-	28	-	30	5.38	6.4
M3.5	M3.5 X 0.6	6	-	8	-	10	-	12	-	14	-	16	-	18	-	20	-	22	-	25	-	28	-	30	5.38	6.4
M4	M4 X 0.7	6	-	8	-	10	-	12	-	14	-	16	-	18	-	20	-	22	-	25	-	28	-	30	7.11	7.9
M5	M5 X 0.8	6	-	8	-	10	-	12	-	14	-	16	-	18	-	20	-	22	-	25	-	28	-	30	7.11	7.9
440	#4-40	-	7.92	-	9.53	-	11.09	-	12.7	-	14.27	15.87	-	17.45	-	19.05	-	20.62	-	22.23	23.8	-	25.4	4.19	4.76	
B440	#4-40	-	7.92	-	9.53	-	11.09	-	12.7	-	14.27	15.87	-	17.45	-	19.05	-	20.62	-	22.23	23.8	-	25.4	5.38	6.35	
632	#6-32	-	7.92	-	9.53	-	11.09	-	12.7	-	14.27	15.87	-	17.45	-	19.05	-	20.62	-	22.23	23.8	-	25.4	5.38	6.35	
B632	#6-32	-	7.92	-	9.53	-	11.09	-	12.7	-	14.27	15.87	-	17.45	-	19.05	-	20.62	-	22.23	23.8	-	25.4	7.11	7.94	
832	#8-32	-	7.92	-	9.53	-	11.09	-	12.7	-	14.27	15.87	-	17.45	-	19.05	-	20.62	-	22.23	23.8	-	25.4	7.11	7.94	
1032	#10-32	-	7.92	-	9.53	-	11.09	-	12.7	-	14.27	15.87	-	17.45	-	19.05	-	20.62	-	22.23	23.8	-	25.4	7.11	7.94	
Bore Length C ± 0.25		3.2	4				5	6.5				9.54														



ADDITIONAL BASIC PARAMETERS

THREAD TYPE	RECOMMENDED MINIMUM THICKNESS OF STEEL SHEET	RECOMMENDED HOLE SIZE IN STEEL SHEET + 0.08 / -0.0
M3	1	4.2
BM3	1	5.4
M3.5	1	5.4
M4	1.3	7.2
M5	1.3	7.2
440	1	4.2
B440	1	5.4
632	1	5.4
B632	1.3	7.14
832	1.3	7.14
032	1.3	7.14

ORDER EXAMPLES:

- IMPBSO-M4-8-ZI, steel standoff, zinc-plated, internal thread M4, total length 8 mm
- IMPBSOS-M4-8, stainless steel standoff, internal thread M4, total length 8 mm
- IMPBSO-032-12.7-ZI, steel standoff, zinc-plated, internal thread UNF #10-32, total length 12.7 mm
- IMPBSO-BM3-8-ZI, steel standoff, zinc-plated, with thicker wall (older specification IMPBSO-3.5-M3-8-ZI)

USE:

- IMPBSO - pressing into steel sheet of max. hardness HR_B 80
- IMPBSOS - pressing into steel sheet of max. hardness HR_B 70

IMPORTANT NOTES:

- All stated dimensions are in mm
- Thread types BM3, B440 and B632 have greater wall thickness. Specification 3.5-M3, 3.5-440, 3.5-632 used as well.
- Stainless steel grade AISI 416 (DIN X12CrS13)
- A special type IMPBSOH is designed for stainless steel sheets HRB 90 (not in stock in BA)
- Data modification reserved without prior notice

IMPTSO
IMPTSOS

/ SELF CLINCHING THREADED STANDOFF FOR THIN SHEETS, ZINC PLATED STEEL

/ SELF CLINCHING THREADED STANDOFF FOR THIN SHEETS, STAINLESS STEEL

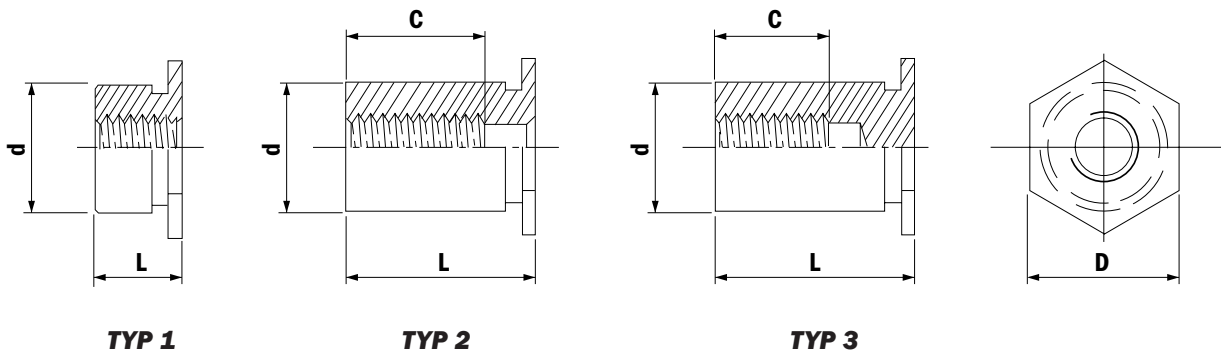
THREADED STANDOFF FOR THIN SHEET / TTSO

Thread Spec.	Thread Size	Length L ± 0.08																				Diameter d - 0.13	MIN C	D NOM
		2.00 ⁽¹⁾	3.00 ⁽¹⁾	4.00 ⁽¹⁾	4.750 ⁽¹⁾	6.00 ⁽¹⁾	6.350 ⁽¹⁾	7.925 ⁽¹⁾	8.00 ⁽²⁾	9.525 ⁽²⁾	10.00 ⁽²⁾	11.10 ⁽²⁾	12.70 ⁽²⁾	14.275 ⁽²⁾	15.875 ⁽²⁾	16.00 ⁽³⁾	17.45 ⁽³⁾	18.00 ⁽³⁾	19.05 ⁽³⁾					
M2.5	M2.5 X 0.45	2.00 ⁽¹⁾	3.00 ⁽¹⁾	4.00 ⁽¹⁾	4.750 ⁽¹⁾	6.00 ⁽¹⁾	6.350 ⁽¹⁾	7.925 ⁽¹⁾	8.00 ⁽²⁾	9.525 ⁽²⁾	10.00 ⁽²⁾	11.10 ⁽²⁾	12.70 ⁽²⁾	14.275 ⁽²⁾	15.875 ⁽²⁾	16.00 ⁽³⁾	17.45 ⁽³⁾	18.00 ⁽³⁾	19.05 ⁽³⁾	4.19	5.2	4.8		
BM2.5	M2.5 X 0.45	2.00 ⁽¹⁾	3.00 ⁽¹⁾	4.00 ⁽¹⁾	6.00 ⁽¹⁾	6.350 ⁽¹⁾	7.925 ⁽²⁾	8.00 ⁽²⁾	9.525 ⁽²⁾	10.00 ⁽³⁾	11.10 ⁽³⁾	12.00 ⁽³⁾	14.00 ⁽³⁾	16.00 ⁽³⁾	18.00 ⁽³⁾	19.00 ⁽³⁾	5.38	5.2	6.4					
M3	M3 X 0.5	2.00 ⁽¹⁾	3.00 ⁽¹⁾	4.00 ⁽¹⁾	6.00 ⁽¹⁾	8.00 ⁽²⁾	10.00 ⁽³⁾	12.00 ⁽³⁾	14.00 ⁽³⁾	16.00 ⁽³⁾	18.00 ⁽³⁾	19.00 ⁽³⁾	4.19	6.2	4.8									
BM3	M3 X 0.5	2.00 ⁽¹⁾	3.00 ⁽¹⁾	4.00 ⁽¹⁾	6.00 ⁽¹⁾	8.00 ⁽²⁾	10.00 ⁽²⁾	12.00 ⁽³⁾	14.00 ⁽³⁾	16.00 ⁽³⁾	18.00 ⁽³⁾	19.00 ⁽³⁾	5.38	6.2	6.4									
M3.5	M3.5 X 0.6	N/A	3.00 ⁽¹⁾	4.00 ⁽¹⁾	6.00 ⁽¹⁾	8.00 ⁽²⁾	10.00 ⁽²⁾	12.00 ⁽³⁾	14.00 ⁽³⁾	16.00 ⁽³⁾	18.00 ⁽³⁾	19.00 ⁽³⁾	5.38	7	6.4									
256	#2-56	2.286 ⁽¹⁾	3.175 ⁽¹⁾	4.750 ⁽¹⁾	6.00 ⁽¹⁾	8.00 ⁽¹⁾	10.00 ⁽²⁾	12.00 ⁽²⁾	14.00 ⁽³⁾	16.00 ⁽³⁾	18.00 ⁽³⁾	19.00 ⁽³⁾	4.19	5.08	4.75									
B256	#2-56	2.286 ⁽¹⁾	3.175 ⁽¹⁾	6.350 ⁽¹⁾	7.925 ⁽²⁾	9.525 ⁽²⁾	11.10 ⁽³⁾	12.70 ⁽³⁾	14.275 ⁽³⁾	15.875 ⁽³⁾	17.45 ⁽³⁾	19.05 ⁽³⁾	5.38	5.08	6.35									
440	#4-40	2.286 ⁽¹⁾	3.175 ⁽¹⁾	4.750 ⁽¹⁾	6.350 ⁽¹⁾	7.925 ⁽²⁾	9.525 ⁽²⁾	11.10 ⁽³⁾	12.70 ⁽³⁾	14.275 ⁽³⁾	15.875 ⁽³⁾	17.45 ⁽³⁾	19.05 ⁽³⁾	4.19	5.588	4.75								
B440	#4-40	2.286 ⁽¹⁾	3.175 ⁽¹⁾	4.750 ⁽¹⁾	6.350 ⁽¹⁾	7.925 ⁽²⁾	9.525 ⁽²⁾	11.10 ⁽²⁾	12.70 ⁽³⁾	14.275 ⁽³⁾	15.875 ⁽³⁾	17.45 ⁽³⁾	19.05 ⁽³⁾	5.38	5.588	6.35								
632	#6-32	N/A	3.175 ⁽¹⁾	4.750 ⁽¹⁾	6.350 ⁽¹⁾	7.925 ⁽²⁾	9.525 ⁽²⁾	11.10 ⁽²⁾	12.70 ⁽³⁾	14.275 ⁽³⁾	15.875 ⁽³⁾	17.45 ⁽³⁾	19.05 ⁽³⁾	5.38	6.858	6.35								

EXPLANATIONS:

⁽¹⁾ values for TYPE 1, ⁽²⁾ values for TYPE 2, ⁽³⁾ values for TYPE 3

For Recommended Hole Size see **ADDITIONAL BASIC PARAMETERS** table in IMPSO (site 1) or IMPBSO (site 2)



ORDER EXAMPLES:

- IMPTSO-M3-8-ZI, steel standoff, zinc-plated, internal thread M3, total length 8 mm
- IMPTSOS-M3-8, stainless steel standoff, internal thread M3, total length 8 mm
- IMPTSO-632-12.7-ZI, steel standoff, zinc-plated, internal thread UNC # 6-32, total length 12.7 mm
- IMPTSO-BM3-8-ZI, steel standoff, zinc-plated, with thicker wall (older specification IMPTSO-3.5-M3-8-ZI)

USE:

- IMPTSO - pressing into steel sheet of max. hardness HR_B 80
- IMPTSOS - pressing into steel sheet of max. hardness HR_B 70

IMPORTANT NOTES:

- All stated dimensions are in mm
- Thread types BM3, B440 and B632 have a greater wall thickness. Specification 3.5-M3, 3.5-440, 3.5-632 is used as well.
- Stainless steel grade AISI 416 (DIN X 12CrS13)
- Standoffs are used for steel sheet thickness 0.65 mm as a minimum
- Data modification reserved without prior notice

IMPKFE / SELF CLINCHING BROACHING TYPE STANDOFF FOR PLASTIC

BROACHING TYPE STANDOFF / PCB1

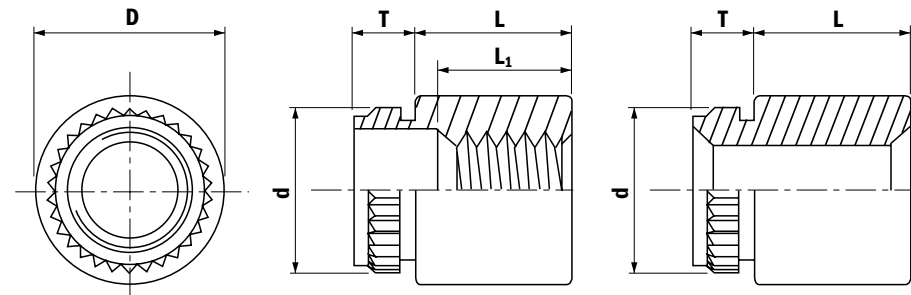
Thread Spec.	Thru Hole +0.10 / -0.08	Length L +0.05 / -0.13															Recommended hole in plastic +0.08/ -0	Minimum Thickness of Plastic	Dimension T max	Diameter d ±0.08	Diameter D ±0.13	
		3	4	6	8	10	12	14	16	18	20	22	24	26	28	30						
M3 X 0.5	3.6	3	-	4	-	6	8	-	10	12	-	14	-	16	-	-	-	4.2	1.53	1.5	4.68	5.56
	4.2	3	-	4	-	6	8	-	10	12	-	14	-	16	-	-	-	5.4	-	1.5	5.87	7.14
	4-40	-	3.175	-	6.350	-	-	9.525	-	-	12.70	-	15.875	-	19.050	-	-	-	1.55	1.524	4.67	5.56
6-32	2.946	-	3.175	-	6.350	-	-	9.525	-	-	12.70	-	15.875	-	19.050	22.225	25.40	-	1.55	1.524	5.87	7.14
	3.632	-	3.175	-	6.350	-	-	9.525	-	-	12.70	-	15.875	-	19.050	-	-	-	-	1.524	4.67	5.56
	4-40	-	3.175	-	6.350	-	-	9.525	-	-	12.70	-	15.875	-	19.050	22.225	25.40	-	-	1.524	5.87	7.14
MIN.THREAD LENGTH L1		ENTIRE THREAD										9.5 (±0.4)			9.5 (±0.4)							

ORDER EXAMPLES:

IMPKFE-M3-10, steel standoff, zinc-plated, internal thread M3, L= 10 mm
 IMPKFE-440-12.70, steel standoff, zinc-plated, internal thread UNC # 4-40, L = 12.70 mm

USE:

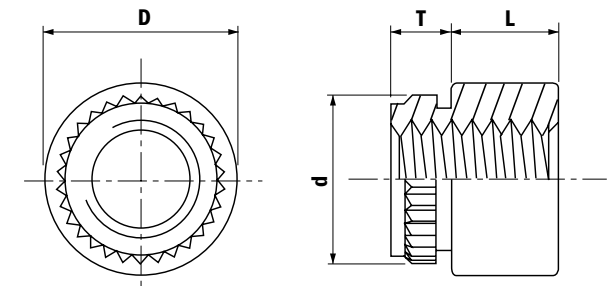
IMPKFE, broaching in plastics of max. hardness HR_B 60
 These are mainly mouldings into plastics for electrical engineering (print plates).



IMPKF2 / SELF CLINCHING BROACHING NUTS FOR PLASTIC

BROACHING TYPE NUTS / PCB2

Thread Spec.	Thread Size	Length L +0.05 / -0.13						Recommended hole in plastic +0.08/-0.00	Min. thickness of plastic	Diameter d ±0.08	Diameter D ±0.13	Length L ± 0.13
		1.5	2	3	4	5	6					
M2	M2 X 0.4	1.5	-	-	-	-	-	3.7	1.53	4.19	5.56	1.5
M2.5	M2.5 X 0.45	1.5	-	-	-	-	-	4.2	1.53	4.68	5.56	1.5
M3	M3 X 0.5	1.5	-	-	-	-	-	4.2	1.53	4.68	5.56	1.5
M4	M4 X 0.7	-	-	2	-	-	-	6.4	1.53	6.81	8.74	2
M5	M5 X 0.8	-	-	-	-	3	-	6.9	1.53	7.37	9.53	3
256	#2-56	-	1.651	-	-	-	-	3.7	1.53	4.19	5.56	1.651
440	#4-40	-	1.651	-	-	-	-	4.2	1.53	4.67	5.56	1.651
632	#6-32	-	1.651	-	-	-	-	5.4	1.53	5.87	7.14	1.651
832	#8-32	-	-	-	2.438	-	-	6.3	1.53	6.81	8.74	2.438
1032	#10-32	-	-	-	-	-	3.226	6.9	1.53	7.37	9.53	3.226



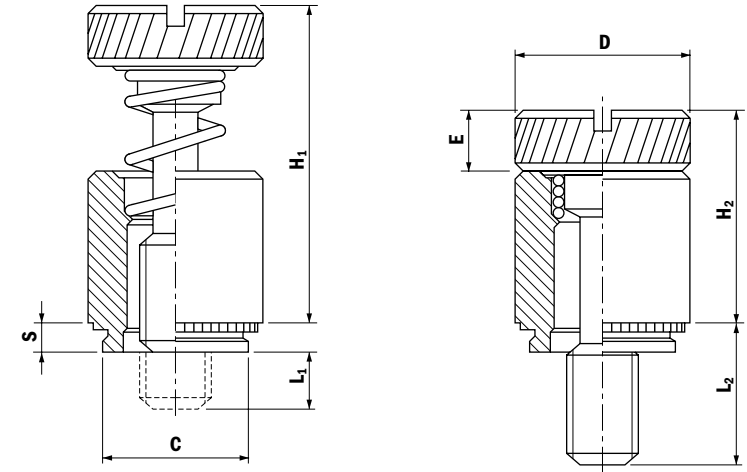
ORDER EXAMPLES:

IMPKF2-M3, steel nut, zinc-plated, internal thread M3
 IMPKF2-440, steel nut, zinc-plated, internal thread UNC # 4-40

USE:

IMPKF2, moulding into plastics of max. hardness HR_B 60
 These are mostly mouldings into plastics in electrical engineering (epoxy print plates with glass fibre, etc.).
 Mouldings are suitable for moulding into softer aluminium alloys as well.

Thread Size	Screw code	Hole Size + 0.08/ -0	Min. Panel Thickness	C max	D + 0.4 - 0.15	L1 ± 0.4	L2	E ± 0.13	H1 ± 1.1	H2 max
M3 X 0.5	40	6.75	1.5	6.7	7.9	0	6.4	1.83	13.8	9.1
	62					3.2	9.5			
M4 X 0.7	50	7.95	1.5	7.9	9.5	0	7.9	2.08	17.6	11.4
	72					3.2	11.1			
	94					6.4	14.3			
M5 X 0.8	50	8.75	1.5	8.7	10.3	0	7.9	2.08	17.6	11.4
	72					3.2	11.1			
	94					6.4	14.3			
M6 X 1.0	60	10.50	1.5	10.5	11.9	0	9.5	2.50	22.4	14.7
	82					3.2	12.7			
	04					6.4	15.9			



ORDER EXAMPLES:

IMPPFC2-M3-40, panel fastener, stainless steel, screw M3 x (40) - code
 IMPPFC2-M6-04, panel fastener, stainless steel, screw M6 x (04) - code

USE:

MPPFC2 - pressing into steel sheet of max. hardness HR_B 70

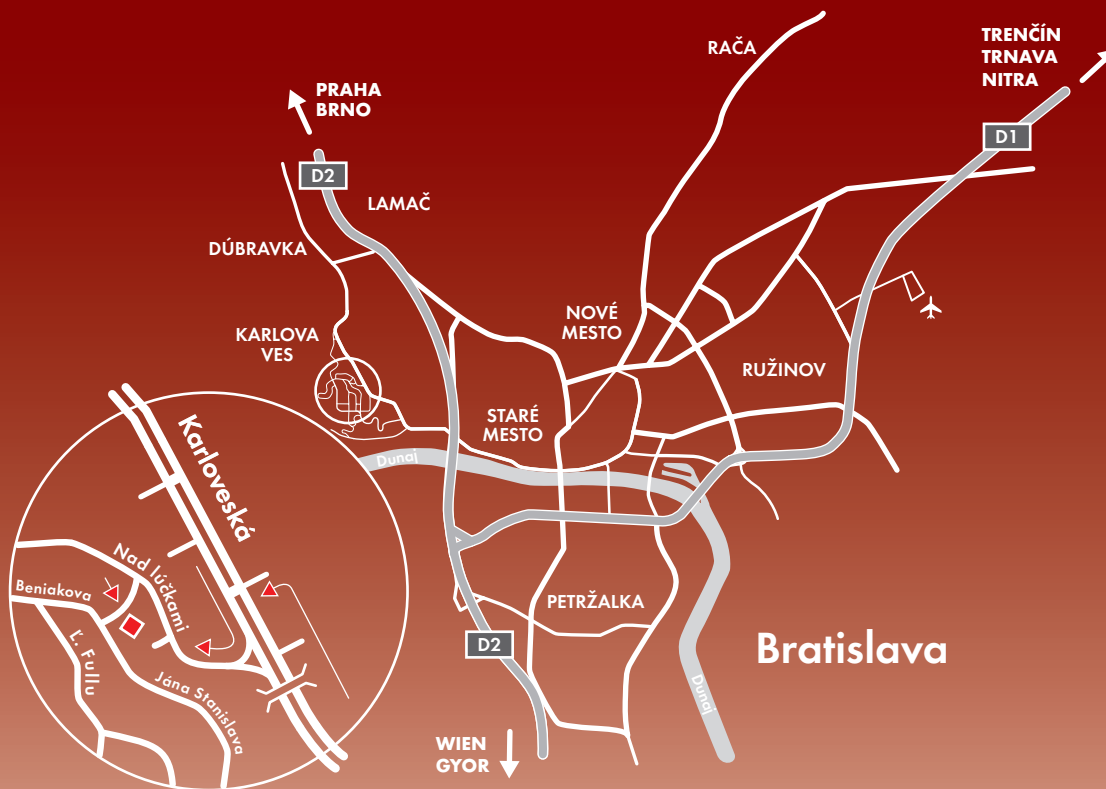
IMPORTANT NOTES:

1. All stated dimensions are in mm (inch - holes in steel sheet)
2. IMPPFC2 - stainless steel, AISI 300
3. Other panel fasteners like IMPPF31, IMPPF30, IMPPF11 are on inquiry
4. Data modification reserved without prior notice

IMPS	SELF CLINCHING NUTS, ZINC PLATED STEEL	1
IMPH	SELF CLINCHING STUDS, ZINC PLATED STEEL	
IMPCLS	SELF CLINCHING NUTS, STAINLESS STEEL	
IMPSP	SELF CLINCHING NUTS FOR STAINLESS STEEL SHEETS, STAINLESS STEEL	2
IMPB	SELF CLINCHING BLIND NUTS, ZINC PLATED STEEL	
IMPBS	SELF CLINCHING BLIND NUTS, STAINLESS STEEL	
IMPF	SELF CLINCHING FLUSH NUTS, STAINLESS STEEL	3
IMPFH	SELF CLINCHING STUDS, ZINC PLATED STEEL	4
IMPFHS	SELF CLINCHING STUDS, STAINLESS STEEL	
IMPHFH	SELF CLINCHING STUDS FOR HIGH DENSITY, ZINC PLATED STEEL	5
IMPHFHS	SELF CLINCHING STUDS FOR HIGH DENSITY, STAINLESS STEEL	
IMPFHL	SELF CLINCHING SMALL FLANGE STUDS, ZINC PLATED STEEL	6
IMPFHLS	SELF CLINCHING SMALL FLANGE STUDS, STAINLESS STEEL	
IMPTPS	SELF CLINCHING PINS, STAINLESS STEEL	7
IMPSO	SELF CLINCHING THROUGH HOLE THREADED STANDOFF, ZINC PLATED STEEL	8
IMPSOS	SELF CLINCHING THROUGH HOLE THREADED STANDOFF, STAINLESS STEEL	
IMPBSO	SELF CLINCHING BLIND HOLE THREADED STANDOFF, ZINC PLATED STEEL	9
IMPBSOS	SELF CLINCHING BLIND HOLE THREADED STANDOFF, STAINLESS STEEL	
IMPTSO	SELF CLINCHING THREADED STANDOFF FOR THIN SHEETS, ZINC PLATED STEEL	10
IMPTSOS	SELF CLINCHING THREADED STANDOFF FOR THIN SHEETS, STAINLESS STEEL	
IMPKFE	SELF CLINCHING BROACHING TYPE STANDOFF FOR PLASTIC	11
IMPKF2	SELF CLINCHING BROACHING NUTS FOR PLASTIC	
IMPPFC2	PANEL FASTENERS, STAINLESS STEEL	12

SELF CLINCHING FASTENERS / MOST FREQUENTLY USED TYPES (ASSORTMENT SELECTION)

connection without compromise



IMP KONTAKT Ltd.

Ferdiša Kostku 1

841 05 Bratislava 4

Slovak Republic

Tel: +421 2 60202070

Fax: +421 2 65423451

E-mail: office@impkontakt.com

www.selfclinchfasteners.eu

www.einpressbefestiger.at, www.impkontakt.com



www.impkontakt.com